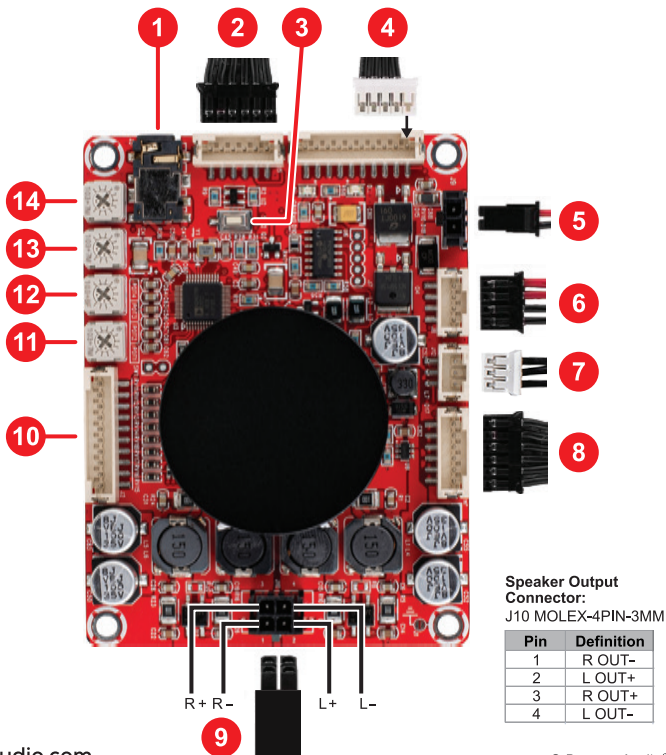


2x50W Class D Audio Amplifier Board with DSP

Quick Start Wiring Guide

Model: DSPB-250

1. 3.5 mm Headphone Jack – J3
2. Audio Expansion Port – J5
3. Reset Switch – SW2
4. AUX IN Port – J6
5. Power Supply Port – J9
6. Battery Board Port – J8
7. Switch Control Port – J12
8. Programming Port – J4
9. Speaker Output Port – J10
10. DSP Expansion Port – J2
11. POT1: Output Audio Gain Control – J3 & J5
12. POT2: High-pass Filter Control – J3 & J5
13. POT3: High-pass Filter Control for Speaker Output – J10
14. POT4: Master Volume Control – J10, J5, J3



Speaker Output Connector:
J10 MOLEX-4PIN-3MM

Pin	Definition
1	R OUT-
2	L OUT+
3	R OUT+
4	L OUT-